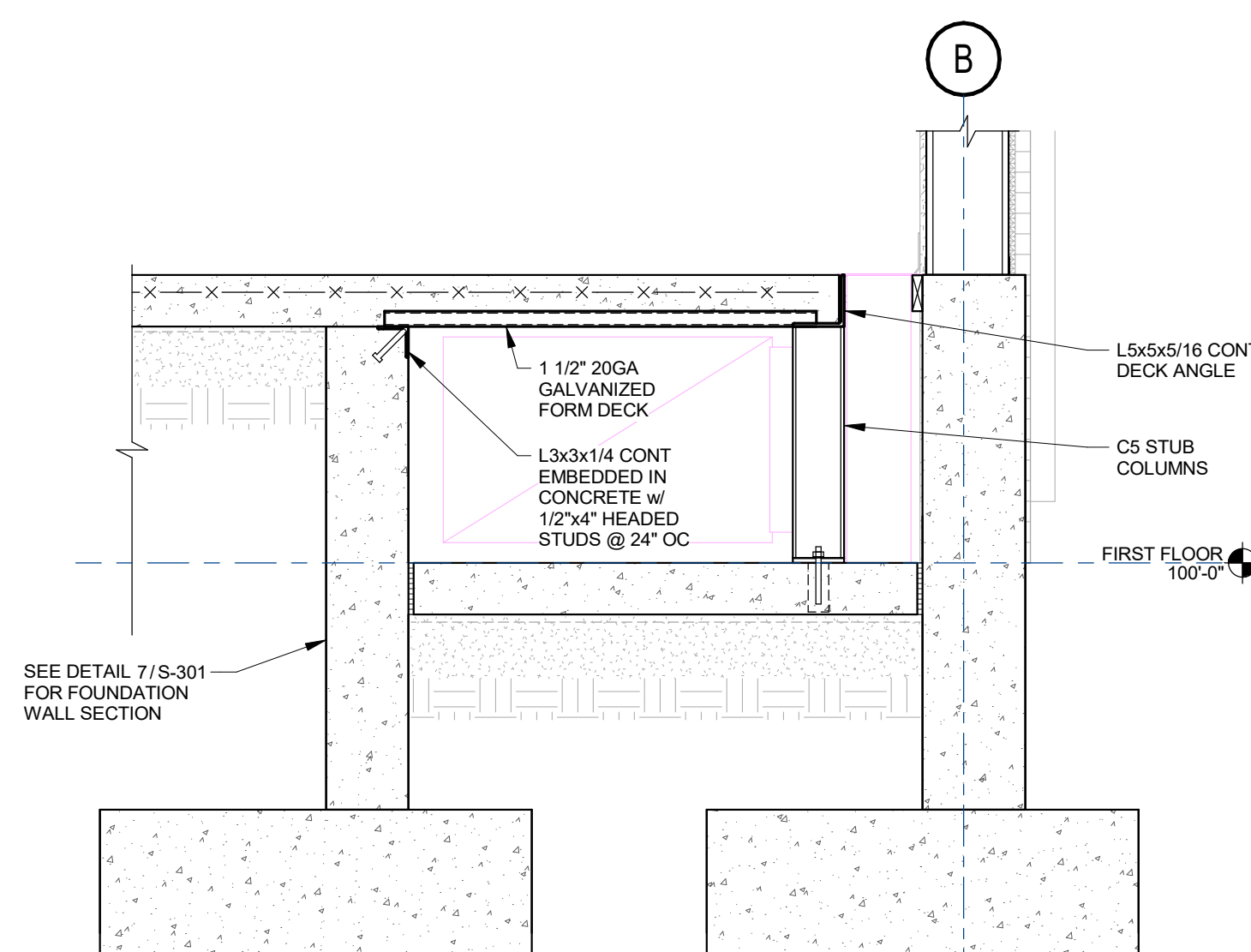


1 SECTION AT STEPPED SEATING
3/4" = 1'-0"

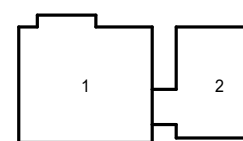


2 EDGE OF PLATFORM AT SLOT DIFFUSER
3/4" = 1'-0"

TowerPinkster
Architecture · Engineering · Interiors

Risepointe
architecture · design · interiors
1001 W. 10th St.
Seattle, WA 98101
P 206.461.6337

PROPOSED SITE IMPROVEMENTS FOR
TOWNE SOUTH CHURCH
2224 PEARTREE RD.
ELIZABETH CITY, NC 27808



KEY PLAN

ARCHITECTURE
Risepointe
CONTACT: CHRIS STABER
200 N. HARRISON ST. UNIT 101
ALCONO, IL 60110
P 630.590.8857
WWW.RISEPONTE.COM

GENERAL CONTRACTOR
AA CHASSON
CONTACT: CHRIS MORRIS
130 E. RICH BLVD.
ELIZABETH CITY, NC 27808
P 252.348.8171
WWW.AACHASSON.COM

CIVIL ENGINEERING
EASTERN CAROLINA CONSTRUCTION
CONTACT: REGAN ROBEY
134 US HWY 108 E
CAMDEN, NC 27805
P 252.621.3570
WWW.EASTERNCAROLINAENGINEERING.COM

STRUCTURAL
TOWER PINKSTER
CONTACT: SALLY RAHLER
4 FULTON ST. E. #200
GRAND RAPIDS, MI 49503
P 616.696.9944
WWW.TOWERPINKSTER.COM

MECHANICAL
TOWER PINKSTER
CONTACT: DENVER WESSELS
4 FULTON ST. E. #200
GRAND RAPIDS, MI 49503
P 616.696.9944
WWW.TOWERPINKSTER.COM

ELECTRICAL
TOWER PINKSTER
CONTACT: CONNOR NICHOLSON
4 FULTON ST. E. #200
GRAND RAPIDS, MI 49503
P 616.696.9944
WWW.TOWERPINKSTER.COM

PLUMBING
TOWER PINKSTER
CONTACT: DENVER WESSELS
4 FULTON ST. E. #200
GRAND RAPIDS, MI 49503
P 616.696.9944
WWW.TOWERPINKSTER.COM

AUDIO-VIDEO-LIGHTING-ACOUSTICS
LIVESPACE
CONTACT: JIM HENRY
4800 STARR ST SE
GRAND RAPIDS, MI 49546
P 616.697.8641
WWW.LIVESPACE.COM

INFORMATION TECHNOLOGY
INTULISE
CONTACT: CHRIS STIEB
151 FORDSBURG DR.
LANCASTER, PA 17601
P 717.786.0385
WWW.INTULISE.COM

NO. DESCRIPTION ISSUE DATE

A. ISSUED FOR PERMIT 2023.03.13

B. ISSUED FOR 95% CD 2024.04.30

C. ISSUED FOR 100% CD 2024.04.30

D. ISSUED FOR 100% CD 2024.04.30

E. ISSUED FOR 100% CD 2024.04.30

F. ISSUED FOR 100% CD 2024.04.30

G. ISSUED FOR 100% CD 2024.04.30

H. ISSUED FOR 100% CD 2024.04.30

I. ISSUED FOR 100% CD 2024.04.30

J. ISSUED FOR 100% CD 2024.04.30

K. ISSUED FOR 100% CD 2024.04.30

L. ISSUED FOR 100% CD 2024.04.30

M. ISSUED FOR 100% CD 2024.04.30

N. ISSUED FOR 100% CD 2024.04.30

O. ISSUED FOR 100% CD 2024.04.30

P. ISSUED FOR 100% CD 2024.04.30

Q. ISSUED FOR 100% CD 2024.04.30

R. ISSUED FOR 100% CD 2024.04.30

S. ISSUED FOR 100% CD 2024.04.30

T. ISSUED FOR 100% CD 2024.04.30

U. ISSUED FOR 100% CD 2024.04.30

V. ISSUED FOR 100% CD 2024.04.30

W. ISSUED FOR 100% CD 2024.04.30

X. ISSUED FOR 100% CD 2024.04.30

Y. ISSUED FOR 100% CD 2024.04.30

Z. ISSUED FOR 100% CD 2024.04.30

AA. ISSUED FOR 100% CD 2024.04.30

AB. ISSUED FOR 100% CD 2024.04.30

AC. ISSUED FOR 100% CD 2024.04.30

AD. ISSUED FOR 100% CD 2024.04.30

AE. ISSUED FOR 100% CD 2024.04.30

AF. ISSUED FOR 100% CD 2024.04.30

AG. ISSUED FOR 100% CD 2024.04.30

AH. ISSUED FOR 100% CD 2024.04.30

AI. ISSUED FOR 100% CD 2024.04.30

AJ. ISSUED FOR 100% CD 2024.04.30

AK. ISSUED FOR 100% CD 2024.04.30

AL. ISSUED FOR 100% CD 2024.04.30

AM. ISSUED FOR 100% CD 2024.04.30

AN. ISSUED FOR 100% CD 2024.04.30

AO. ISSUED FOR 100% CD 2024.04.30

AP. ISSUED FOR 100% CD 2024.04.30

AQ. ISSUED FOR 100% CD 2024.04.30

AR. ISSUED FOR 100% CD 2024.04.30

AS. ISSUED FOR 100% CD 2024.04.30

AT. ISSUED FOR 100% CD 2024.04.30

AU. ISSUED FOR 100% CD 2024.04.30

AV. ISSUED FOR 100% CD 2024.04.30

AW. ISSUED FOR 100% CD 2024.04.30

AX. ISSUED FOR 100% CD 2024.04.30

AY. ISSUED FOR 100% CD 2024.04.30

AZ. ISSUED FOR 100% CD 2024.04.30

BA. ISSUED FOR 100% CD 2024.04.30

BB. ISSUED FOR 100% CD 2024.04.30

BC. ISSUED FOR 100% CD 2024.04.30

BD. ISSUED FOR 100% CD 2024.04.30

BE. ISSUED FOR 100% CD 2024.04.30

BF. ISSUED FOR 100% CD 2024.04.30

BG. ISSUED FOR 100% CD 2024.04.30

BH. ISSUED FOR 100% CD 2024.04.30

BI. ISSUED FOR 100% CD 2024.04.30

BJ. ISSUED FOR 100% CD 2024.04.30

BK. ISSUED FOR 100% CD 2024.04.30

BL. ISSUED FOR 100% CD 2024.04.30

BM. ISSUED FOR 100% CD 2024.04.30

BN. ISSUED FOR 100% CD 2024.04.30

BO. ISSUED FOR 100% CD 2024.04.30

BP. ISSUED FOR 100% CD 2024.04.30

BQ. ISSUED FOR 100% CD 2024.04.30

BR. ISSUED FOR 100% CD 2024.04.30

BS. ISSUED FOR 100% CD 2024.04.30

BT. ISSUED FOR 100% CD 2024.04.30

BU. ISSUED FOR 100% CD 2024.04.30

BV. ISSUED FOR 100% CD 2024.04.30

BW. ISSUED FOR 100% CD 2024.04.30

BX. ISSUED FOR 100% CD 2024.04.30

BY. ISSUED FOR 100% CD 2024.04.30

BZ. ISSUED FOR 100% CD 2024.04.30

CA. ISSUED FOR 100% CD 2024.04.30